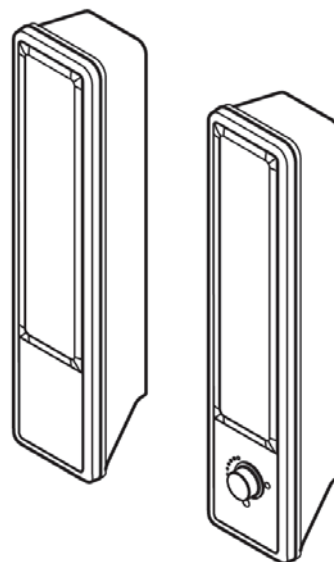


SMART™



Service Parts Diagrams

**For Model:
SBA-V**

Service Parts Diagrams Revision History

Revision 1 - May, 2011

- New document

Revision 2 - February, 2017

- Change 60-00061-20 to 1023046

Standard Warranty Terms

Base product: One-year limited equipment warranty

First Customer Ship: April, 2011

SMART Technologies

3636 Research Road NW
Calgary, AB T2L 1Y1
CANADA

Support +1.403.228.5940 or Toll Free 1.866.518.6791 (Canada/U.S.)

Support Fax +1.403.806.1256

ServiceParts@smarttech.com www.smarttech.com



© 2017 SMART Technologies ULC. All rights reserved. SMART Board, smarttech and the SMART logo are trademarks or registered trademarks of SMART Technologies ULC in the U.S. and/or other countries. All other third-party product and company names are for identification purposes only and may be trademarks of their respective owners. Contents are subject to change without notice. 02/2017.

Service Parts Diagrams for the SBA-V Audio System

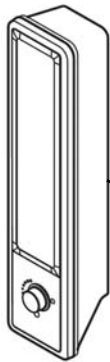
Identifying Your Product Using the Serial Number 1

Ordering Parts 1

SBA-V Parts 2

Identifying Your Product Using the Serial Number

To make sure that you have the correct service parts diagrams, you must verify the serial number of your SBA-V. The serial number will be located on the back of the control speaker. An example of the serial number format is shown below.



Serial Number Location

D012DW10A0016

Serial Number Example

Ordering Parts

Customers

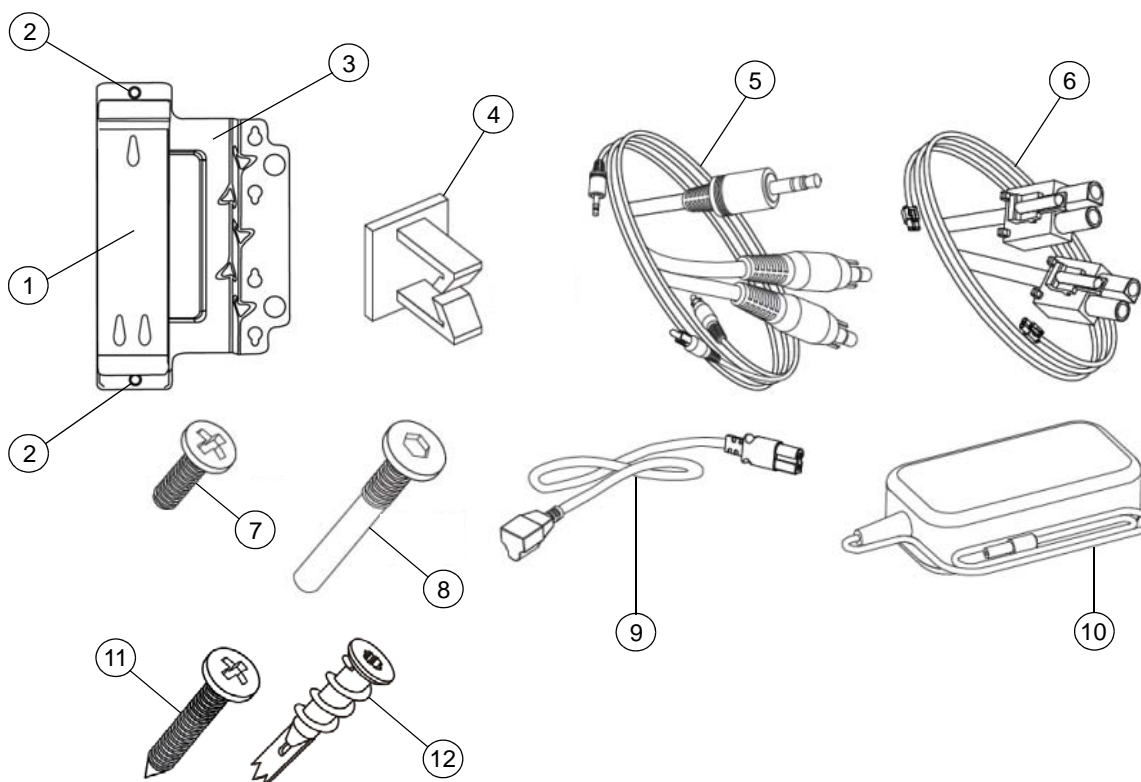
To order any of the parts in these service parts diagrams, contact your local reseller.
To find a reseller near you, visit www.smarttech.com/where.

Dealers and Distributors

For specific technical and pricing enquiries in regards to these diagrams please contact our service parts department.
Pricing is also available on-line via the SOURCE website (source.smarttech.com).

E-mail: serviceparts@smarttech.com
Phone: 1.888.42.SMART
International: +1.403.245.0333

SBA-V Parts



| Item | Part No. | Qty | Description |
|------|-------------|-----|---|
| 1 | 51-00770-20 | 2 | Bracket, wall mounting, speaker NOTE: Attaches to speaker body. |
| 2 | 30-01247-20 | 4 | Screw, M6 × 6 mm, Phillips, button head NOTE: For attaching 51-00770-20 to 51-00771-21. |
| 3 | 51-00771-21 | 2 | Bracket, mounting NOTE: Attaches to 51-00770-20 for mounting speakers to SMART Board. |
| 4 | 30-01281-20 | 2 | Clip, saddle "U", wire management |
| 5 | 93-00830-20 | 1 | Cable, audio, 3.5 mm male to dual RCA male, 14' 9" (4.5 m) NOTE: Connects control speaker to projector. |
| 6 | 93-00829-20 | 1 | Cable, audio, speaker, 9' 10" (3 m) NOTE: Connects audio from right to left speakers. |
| 7 | 30-00915-20 | 8 | Screw, No. 8 × 1/2", Phillips, pan head, for plastics NOTE: For attaching speakers to SMART Board. |
| 8 | 30-01248-20 | 2 | Screw, M4 × 22 mm, hex socket, button head NOTE: For attaching 51-00770-20 to speaker body. |
| 9 | 93-00751-20 | 1 | Cable, power, North America, 14' 9" (4.5 m) |
| 9 | 93-00752-20 | 1 | Cable, power, United Kingdom, 14' 9" (4.5 m) |
| 9 | 93-00753-20 | 1 | Cable, power, Europe, 14' 9" (4.5 m) |
| 9 | 93-00754-20 | 1 | Cable, power, Australia, 14' 9" (4.5 m) |
| 9 | 93-00755-20 | 1 | Cable, power, Japan, 14' 9" (4.5 m) |
| 9 | 93-00756-20 | 1 | Cable, power, China, 14' 9" (4.5 m) |
| 9 | 93-00757-20 | 1 | Cable, power, Korea, 14' 9" (4.5 m) |

| | | | |
|----|-------------|---|---|
| 10 | 1023046 | 1 | Power supply, 18V DC, 3A, universal switching |
| 11 | 30-00969 | 4 | Screw, No. 8 × 1", Phillips, truss head NOTE: Threads into drywall anchors for wall mounting. |
| 12 | 30-00122-20 | 4 | Anchor, self drilling, drywall |